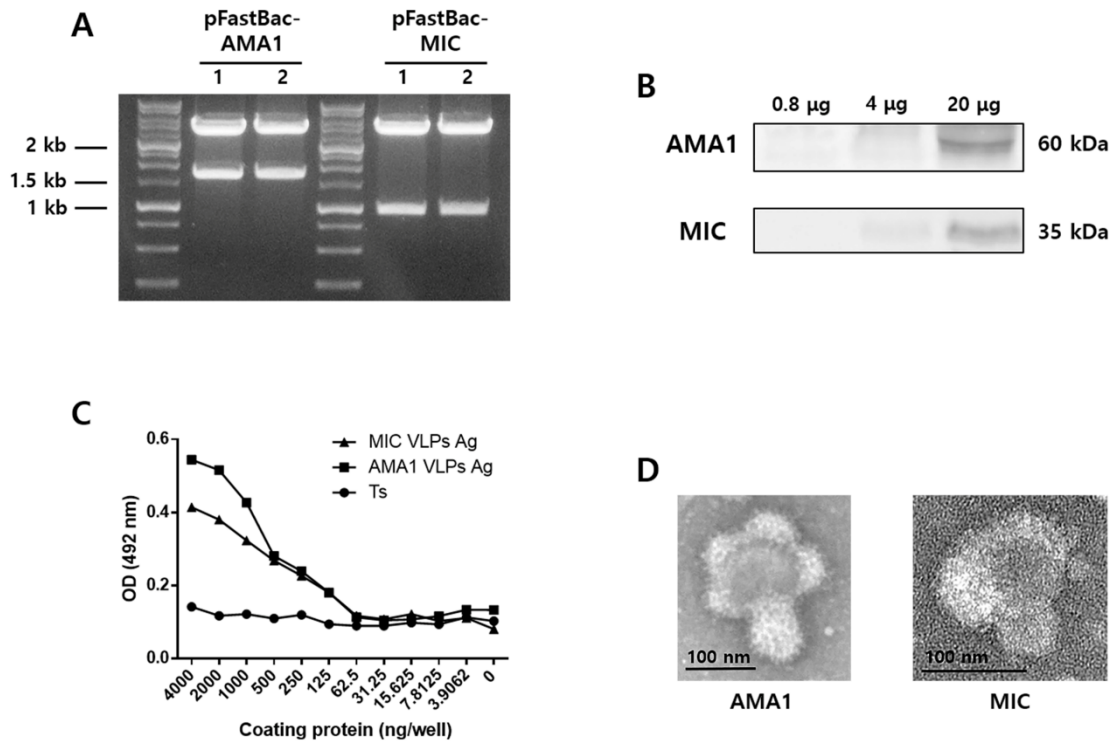


Supplementary Figure 1. Gene cloning and characterization of AMA1 and MIC VLPs



**Fig. S1:** (A) Restriction enzyme digestion of vectors containing codon-optimized *P. berghei* AMA1 and MIC genes. (B) Target antigen expression on the VLPs confirmed by western blotting. (C) Confirmation of *P. berghei* specificity of the polyclonal antibody acquired from *P. berghei*-infected mice by ELISA. (D) Visualization of morphological features of VLPs under TEM.