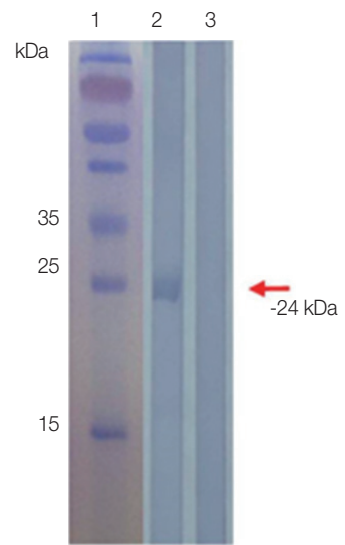


**Fig. S1.** rSfSAG4 probed with mouse anti-rSfSAG4 (A), anti-SfT-LA (B, lane 1) and anti-BTTLA (B, lane 3) immune sera.



**Fig. S2.** Reactivity of (A) *S. falcatula* total lysate with a selected positive serum and healthy donors by Western blot.