



Molecular cloning, identification, transcriptional analysis, and silencing of enolase on the life cycle of *Haemaphysalis longicornis* (Acari, Ixodidae) tick



Md. Samiul Haque¹ , Md. Khalesur Rahman² , Mohammad Saiful Islam^{1,3} , Myung-Jo You^{1,*}

¹Laboratory of Veterinary Parasitology, College of Veterinary Medicine and Bio-Safety Research Center, Jeonbuk National University, Iksan 54596, Korea; ²Department of Microbiology, Faculty of Veterinary and Animal Science, Hajee Mohammad Danesh Science and Technology University, Dinajpur 5200, Bangladesh; ³Department of Medicine Surgery & Obstetrics, Faculty of Veterinary and Animal Science, Hajee Mohammad Danesh Science and Technology University, Dinajpur 5200, Bangladesh

Abstract

Received: 4 March 2023
Accepted: 10 May 2023

*Correspondence
(tick@jbnu.ac.kr)

Citation

Haque MS, Rahman MK, Islam MS, You MJ. Molecular cloning, identification, transcriptional analysis, and silencing of enolase on the life cycle of *Haemaphysalis longicornis* (Acari, Ixodidae) tick. Parasites Hosts Dis 2024;62(2):226-237.

Ticks, blood-sucking ectoparasites, spread diseases to humans and animals. *Haemaphysalis longicornis* is a significant vector for tick-borne diseases in medical and veterinary contexts. Identifying protective antigens in *H. longicornis* for an anti-tick vaccine is a key tick control strategy. Enolase, a multifunctional protein, significantly converts D-2-phosphoglycerate and phosphoenolpyruvate in glycolysis and gluconeogenesis in cell cytoplasm. This study cloned a complete open reading frame (ORF) of enolase from the *H. longicornis* tick and characterized its transcriptional and silencing effect. We amplified the full-length cDNA of the enolase gene using rapid amplification of cDNA ends. The complete cDNA, with an ORF of 1,297 nucleotides, encoded a 432-amino acid polypeptide. Enolase of the Jeju strain *H. longicornis* exhibited the highest sequence similarity with *H. flava* (98%), followed by *Dermacentor silvarum* (82%). The enolase motifs identified included N-terminal and C-terminal regions, magnesium binding sites, and several phosphorylation sites. Reverse transcription-polymerase chain reaction (RT-PCR) analysis indicated that enolase mRNA transcripts were expressed across all developmental stages of ticks and organs such as salivary gland and midgut. RT-PCR showed higher transcript levels in syn-ganglia, suggesting that synganglion nerves influence enolase's role in tick salivary glands. We injected enolase double-stranded RNA into adult unfed female ticks, after which they were subsequently fed with normal unfed males until they spontaneously dropped off. RNA interference significantly ($P < 0.05$) reduced feeding and reproduction, along with abnormalities in eggs (no embryos) and hatching. These findings suggest enolase is a promising target for future tick control strategies.

Keywords: Double-stranded RNA, knockdown, real-time PCR, RNA interference, transcript, vaccine

Introduction

Haemaphysalis longicornis is a common tick in Korea and is widely recognized in many nations, ranging from Australia to far east Asia. *H. longicornis* causes economic losses of livestock due to irritation from blood sucking and functions as an infection vector, lowering the quality of the leather. *H. longicornis* is a vector for *Rickettsia* spp., *Anaplasma* spp., *Borrelia* spp., *Babesia* spp., *Francisella* spp., *Bartonella* spp., *Coxiella* spp., and severe fever with thrombocytopenia syndrome virus [1].

Tick control is challenging because most of the acaridae are treatment-resistant [2]. De-

© 2024 The Korean Society for Parasitology and Tropical Medicine

This is an Open Access article distributed under the terms of the Creative Commons Attribution Non-Commercial License (<https://creativecommons.org/licenses/by-nc/4.0>) which permits unrestricted non-commercial use, distribution, and reproduction in any medium, provided the original work is properly cited.

Author contributions

Conceptualization: Haque MS, Rahman MK, Islam MS
 Data curation: Haque MS, Rahman MK, Islam MS
 Formal analysis: Haque MS, Rahman MK, Islam MS
 Funding acquisition: You MJ
 Investigation: Haque MS
 Methodology: Haque MS, Rahman MK, You MJ
 Project administration: You MJ
 Resources: You MJ
 Software: Haque MS, Rahman MK
 Supervision: Islam MS, You MJ
 Validation: Haque MS
 Visualization: Rahman MK
 Writing – original draft: Haque MS
 Writing – review & editing: Haque MS, Islam MS, You MJ

Conflict of interest

The authors have declared that there is no conflict of interest.

ORCID

Md. Samiul Haque
 (<https://orcid.org/0000-0003-3599-9179>)
 Md. Khalesur Rahman
 (<https://orcid.org/0000-0002-1927-0460>)
 Mohammad Saiful Islam
 (<https://orcid.org/0000-0002-2106-6637>)
 Myung-Jo You
 (<https://orcid.org/0000-0003-4766-0201>)

termining a molecular biological approach would be helpful in identifying potential proteins that play a role in the tick life cycle. These proteins could be used to design a vaccine target based on a better understanding of tick biology. Tick salivary enolase and its related proteins are important for tick research. The enolase of *H. longicornis* is highly expressed in the salivary gland.

Enolase from the Jeju strain *H. longicornis* tick has been identified and confirmed [3]. However, information on tick enolase is limited and the exact mechanisms need to be further evaluated. Enolase plays a vital role in triggering an immune response that aids the body in defending against the infection. Previous research has indicated that enolase could serve as a promising target for managing *trypanosomatid* parasites, *Nilaparvata lugens*, argasid ticks like *Ornithodoros moubata*, and *Haemaphysalis flava* [4–6].

RNA interference (RNAi) is a simple and rapid method of silencing gene expression. *Caenorhabditis elegans* was the first organism in which RNAi was used to determine the functional state of a gene [7]. Currently, RNAi is successfully used in tick gene functional studies [8]. RNAi experiments and immunization trials showed that enolase could also be involved in the regulation of tick reproduction, indicating new potential control strategies [9]. Cloning and characterization of enolase could help to more fully understand the tick-host relationship and its physiological roles in tick biology.

In the present study, we silenced salivary enolase using RNAi to investigate its role in feeding and reproduction. Here, we report the cloning, expression, and functional analysis of the enolase gene from the salivary gland and which may help to select antigens as vaccine candidates

Materials and Methods

Tick maintenance and collection of ticks

The *H. longicornis* Jeju strain has been cultured in our laboratory since 2003. The ticks were reared by feeding on the ear of specific pathogen-free New Zealand White rabbits (Samta-ko, Osan, Korea), using tape and kept in an incubator at 25°C and 95% humidity. Animals used in our experiments were treated under the ethical guidelines of the Jeonbuk National University Animal Care and Use Committee (JBNU 2022-094).

RNA extraction and cDNA synthesis

For cDNA synthesis, total RNA was extracted from adult ticks using a total RNA extraction kit (RiboEx, GeneAll Biotechnology, Seoul, Korea) according to the manufacturer's instructions. RNA concentration was quantified using a NanoDrop 2000 spectrophotometer (Thermo Fisher Scientific, Waltham, MA, USA). Subsequently, cDNA was synthesized from adult, nymph, larva using a WizScript cDNA synthesis kit (Wizbio solutions, Seongnam, Korea) according to the manufacturer's instructions. The samples were stored at -70°C.

Cloning of enolase cDNA

To clone a complete open reading frame (ORF) of enolase from *H. longicornis*, we aligned enolase-encoding nucleotide sequences from different species and designed degenerated forward primer enolase-DF and reverse primer enolase-DR (Supplementary Table S1).

PCR amplification was performed using EzPCR HS Plus 5X PCR master mix (Elpis-Bio-tech, Daejeon, Korea) with a master cycler gradient (Eppendorf, Hamburg, Germany). PCR conditions were as follows: 95°C for 3 min followed by 33 cycles at 95°C for 30 sec, 54°C for 30 sec, and 1 min at 72°C with a final extension at 10 min at 72°C. PCR products were visualized using 1.2% agarose gel electrophoresis. A 247-bp (Supplementary Fig. S1) amplified PCR product was excised and purified using the EZ-Pure Gel Extraction Kit Ver. 2 (Enzynomics, Daejeon, Korea) according to the manufacturer’s instructions. The purified DNA fragment was cloned into an All in One vector (BIOFACT, Daejeon, Korea) according to the manufacturer’s instructions. Positive clones were sequenced and analyzed to determine the complete ORF.

Sequence analyses

Nucleotides and the deduced amino acid sequences were analyzed using the online EMBOSS translation program (https://www.ebi.ac.uk/Tools/stt/emboss_transeq/). The 1,297-bp sequence, corresponding to 432 amino acid sequence was compared with other known enolase sequences from the NCBI database using sequence alignment software T-coffee (<http://tcoffee.crg.cat/apps/tcoffee/do:regular>) [10]. Multiple sequence alignment was performed using T-coffee (<http://tcoffee.crg.cat/apps/tcoffee/do:regular>) [10] combined with Bio Edit software ver 7.2.1 implementing the Clustal W algorithm. Identity percentage of enolase nucleotides and amino acid were assessed by multiple alignment tool Clustal Omega [11] (Fig. 1). A phylogenetic tree was constructed with MEGA X software using neighbor-joining (NJ) methods [12].

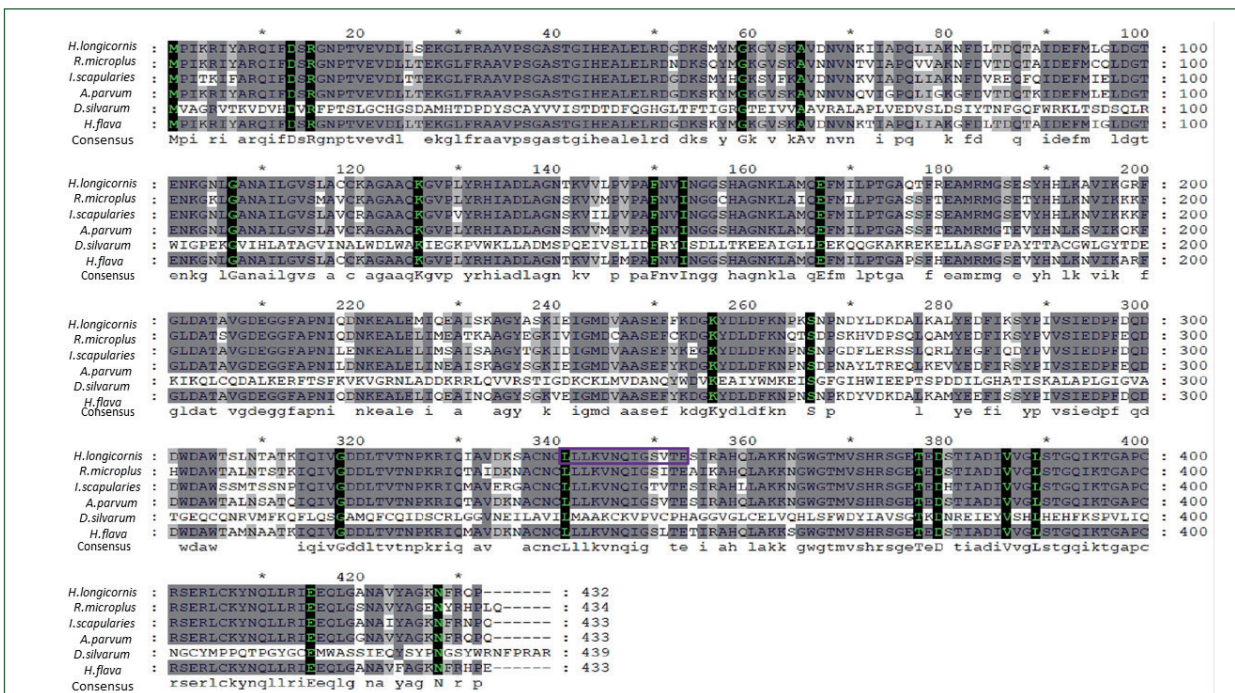


Fig. 1. Multiple alignment of enolase amino acid sequence in ticks. The alignment of enolase amino acid sequence from *Dermacentor silvarum* (XM_037726356.1), *Ixodes scapularis* (XM_029979980.4), *Rhipicephalus microplus* (MW678616.1), *Amblyomma parvum* (GBBL01001179.1), and *Haemaphysalis flava* (KM191327.1). Asterisks indicate conserved residues. Motifs are indicated by boxed letters.

Synthesis of double-stranded RNA (dsRNA)

The enolase PCR product was joined to a T7 promotor sequence using T7 promotor-linked (at both 5' and 3' ends) as described previously [13] with oligonucleotide primers (Supplementary Table S1). T7 promoter-linked oligonucleotide primers, forward primer DsE-F (double-stranded RNA enolase forward) and reverse primer DsE-R (double-stranded RNA enolase reverse) for the enolase gene were used to generate the template for double-stranded RNA (dsRNA; Supplementary Table S1). PCR amplification profile was as follows: 95°C for 2 min followed by 6 cycles at 95°C for 30 sec, 57°C for 30 sec, and 72°C for 1 min, and 28 cycles at 95°C for 20 sec, 75°C for 30 sec, and 72°C for 1 min, with a final extension at 72°C for 5 min. PCR bands were visualized using 1% agarose gel electrophoresis. PCR products were purified using the EZ-Pure PCR Purification Kit ver. 2 (Enzymomics, Korea) according to the manufacturer's protocol. dsRNA was synthesized from T7-linked DNA using the HI Scribe T7 High Yield RNA Synthesis Kit (New England Bio Labs, Ipswich, MA, USA) according to the manufacturer's protocol. The dsRNA concentration was measured using a NanoDrop spectrophotometer, and aliquots were stored at -70°C until the next use.

Injection of double-stranded RNA (dsRNA)

Adult unfed female ($n=20$) and male ticks ($n=20$) were collected. The injection dose for the target gene was selected as described previously [14,15]. The ticks placed ventral side up on double sticky tape. Ticks were then injected with dsRNA through the membrane of the 4th coxa under a dissecting microscope. Group A (20 female ticks) was injected with 500 ng/tick of enolase dsRNA. Group B was injected with injection buffer (10 mM Tris-HCl, pH 7.0 and 1 mM EDTA) as a control [13]. Ticks were injected with dsRNA as previously described [16,17] using a Hamilton 33-gauge needle. After injection, ticks were kept overnight in a 25°C incubator with high humidity to maintain survival. Injected ticks in each group were mixed with an equal number of male ticks and then attached to 4 SPF rabbit ears. To observe gene silencing, 3 female ticks from each group were collected after 5 days of feeding. RNA was extracted describe above and reverse transcription PCR (RT-PCR) and real-time PCR were performed for gene expression analysis. The remaining ticks were left to feed up to the spontaneous drop-down. Feeding time, blood engorgement, egg mass weight, and hatching rate were recorded.

Enolase gene expression analysis using RT-PCR and qPCR

To determine enolase gene expression in different developmental stages (eggs, larvae, nymph, and adult ticks) [18,19] and 2 partially engorged females were removed for salivary gland midgut collection, cDNA was subjected to RT-PCR and qPCR analyses as described in our previous experiments [19]. RT-PCR was performed with EzPCR HS Plus 5X PCR master mix (Elpis-Biotech) with a master cycler gradient kit (Eppendorf) as described above using gene-specific forward and reverse primers (Supplementary Table S1). To measure the enolase gene expression levels before and after knockdown, qPCR was performed using a One-Step SYBR Green Prime Script RT-PCR Kit II with a Thermal Cycler Dice system (Perfect Real Time, Takara, Kyoto, Japan) with gene-specific primers used in RT-PCR. Actin gene (GenBank accession no: AY254898.1) was used as the internal controls (Supplementary Table S1). qPCR condition was as follows: 95°C for 5 min followed by 40

cycles of 95°C for 15 sec, 56°C for 30 sec, 72°C for 30 sec, and final dissociation. Data were normalized with actin, and the $\Delta\Delta\text{Ct}$ value was calculated [21].

Statistical analysis

Statistical analysis was performed using Student's *t*-test (unpaired and unequal variances) and one-way ANOVA with Bonferroni's multiple comparison tests with Graph Pad Prism 5 (Graph Pad Software, La Jolla, CA, USA). Values are presented as the mean \pm SD. *P*-values < 0.05 were considered statistically significant compared with the control group.

Results

Cloning and sequence analyses of the partial cDNA encoding *H. longicornis* enolase

Enolase is responsible for phosphorylation of many enzymes in eukaryotic cells [22]. We identified a complete ORF of enolase cDNA from Jeju strain *H. longicornis* extending from 1 to 1,297 bp using PCR and cloning. We deposited the sequence into the GenBank database under accession number ON871822. The corresponding amino acid sequences verified using EMBOSS translation programs (https://www.ebi.ac.uk/Tools/st/emboss_transeq) represented 432 amino acid polypeptides. The theoretical molecular mass was 46,850.31 Da, with the isoelectric point of 5.91 using ExPASy, the Molecular Biology Server of the Swiss Institute of Bioinformatics (<https://www.expasy.org>). We identified motifs through Interpro analysis (<http://www.ebi.ac.uk/interpro/search/sequence-search>). Alignment showed conserved active enolase sites in the amino acid sequence. The position of the enolase N-terminal domain at position 3–134 amino acids, enolase C-terminal domain at 142–432, enolase signature sequence at 341–354, metal binding site (D 246, I 290, V 317), casein kinase II phosphorylation site at 238–241, protein kinase C phosphorylation site at 354–356, and tyrosine kinase phosphorylation site at 50–57, were predicted in the

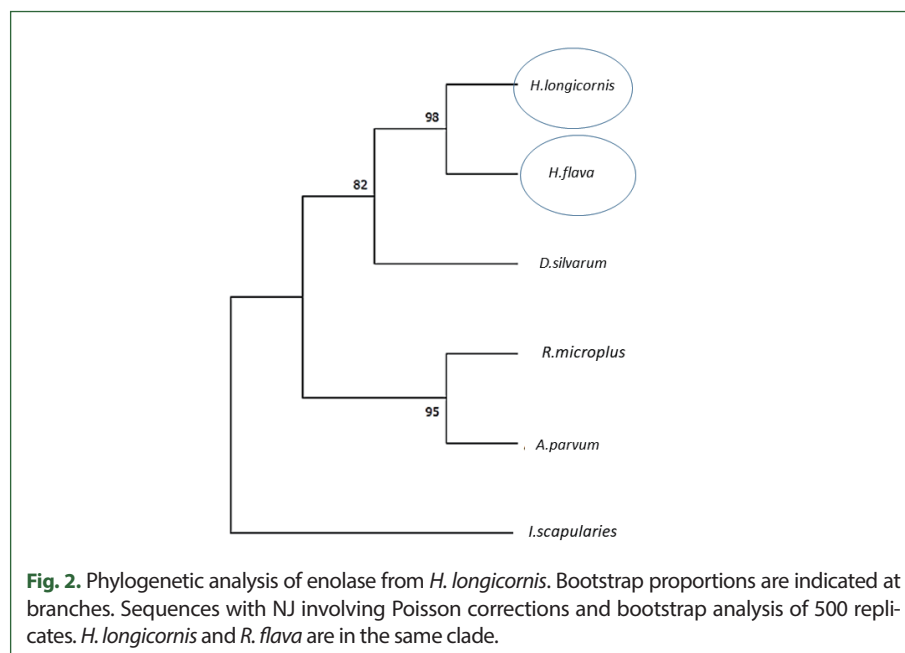


Fig. 2. Phylogenetic analysis of enolase from *H. longicornis*. Bootstrap proportions are indicated at branches. Sequences with NJ involving Poisson corrections and bootstrap analysis of 500 replicates. *H. longicornis* and *R. flava* are in the same clade.

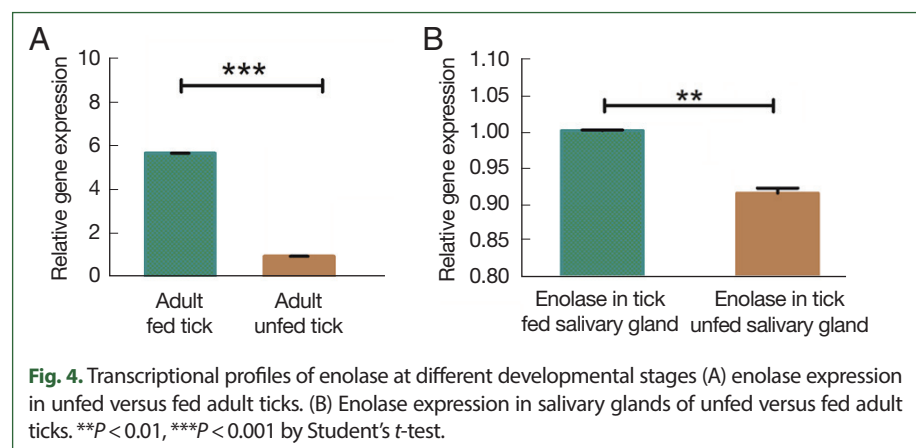
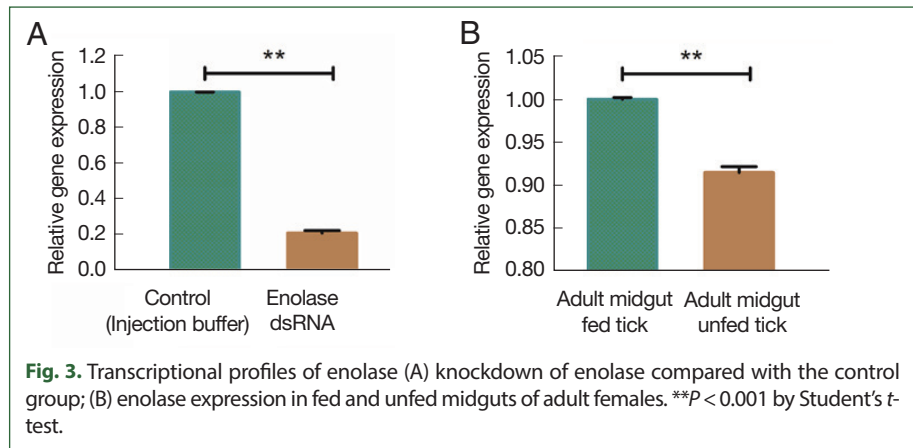
Conserved Domains database (CDD-NCBI) [23] and ScanProsite [24] indicated the identity of enolase (Supplementary Fig. S2).

Sequence similarity and phylogenetic analyses

Based on cloning and sequencing, an entire ORF of enolase of the Ixodidae tick *H. longicornis* was identified and enolase nucleotides and matching amino acid sequences were highly conserved across many taxa. Enolase amino acid and nucleotide sequences from tick species *Dermacentor silvarum* (XM_037726356.1), *Ixodes scapularis* (XM_029979980.4), *Rhipicephalus microplus* ((MW678616.1), *Amblyomma parvum* (GBBL01001179.1), and *Haemaphysalis flava* (KM191327.1) were collected from the NCBI database and compared for identity with the *H. longicornis* enolase sequence. When we conducted the phylogenetic analysis with the amino acid sequences using NJ with Poisson corrections [23], the Jeju strain *H. longicornis* had the highest sequence similarity with the enolase of *H. flava* (98%) followed by *Dermacentor silvarum* (82%) (Fig. 2).

Transcriptional analysis of enolase at different developmental stages by RT-PCR and qPCR

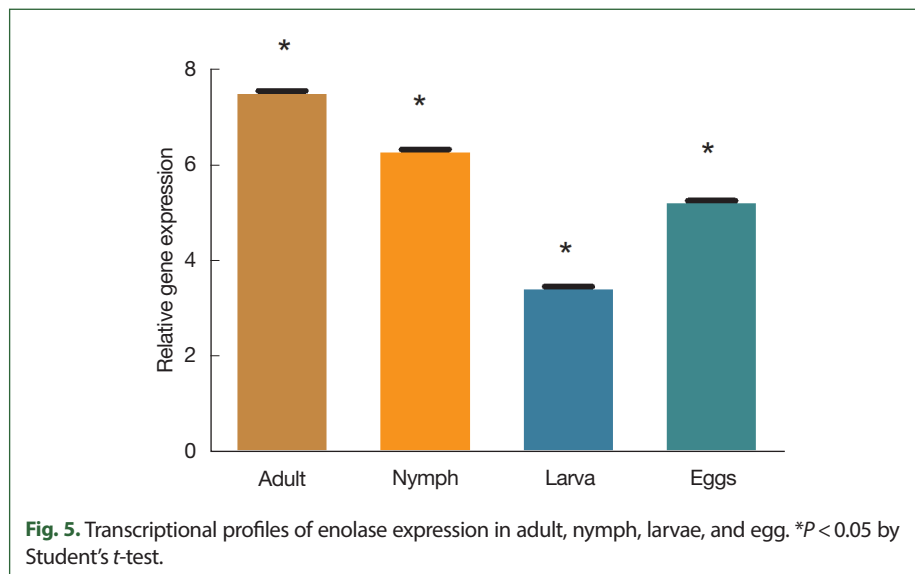
The blood feeding capability of larvae, nymphs, and adults differs from one stage to another.



er. For transcriptional analysis of enolase, total RNA from different life stages were extracted. Adult tick midgut fed and unfed were subjected to RT-PCR and qPCR. Enolase mRNA transcripts were detected in all developmental stages. Conventional PCR showed significantly higher enolase expression at the tissue level in different life stages. In addition, enolase was not detected in the hemolymph of *H. longicornis* ticks fed for 7 days (Supplementary Fig. S1). The degree of transcription was measured using qPCR. In the adult stage, enolase mRNA transcription was relatively higher than in other developmental stages. The expression level of enolase mRNA was higher in adult ticks compared to nymph, larvae, and egg. The expression level of enolase in nymphs, adults, eggs and larvae was 6.33-, 7.56-, and 5.26, 3.46-fold respectively.

Effect of knockdown of enolase

Unfed adult female ticks were injected with enolase or unrelated dsRNA, after which they were allowed to feed on a rabbit's ear with an equal number of male ticks. Enolase knockdown was confirmed by using qPCR analysis. After 5 days of attachment, enolase expression in dsRNA-injected ticks was compared with that of control ticks. Knockdown adult ticks had low enolase expression compared with the control group (Fig. 3A). Enolase expression in the midgut of fed ticks was higher than in unfed ticks (Fig. 3B). In adult ticks after a blood meal, enolase mRNA expression levels in the salivary gland and midgut were significantly higher (1.002-fold) than in that of unfed ticks 0.92-fold (Fig. 4A). Notably, enolase expression in the salivary gland (5.68-fold) of fed ticks had higher enolase expression than in the salivary gland of unfed (0.98-fold) adult female ticks (Fig. 4B). Enolase expression in adult, nymph, larvae, and eggs is shown in Fig. 5. However, significant variation regarding attachment rates (75%), feeding (11 days), and ovipositional period (21–33 days) was observed (Table 1). Egg abnormalities were visible in enolase dsRNA-treated ticks (Fig. 6). Phenotypic changes in ticks are shown in Fig. 7. Phenotypic changes in dsRNA-treated adult female ticks were easily differentiated from those of control ticks (Fig. 7).



Effects on feeding duration and engorgement

To verify the effects of enolase, engorgement weight and feeding duration were analyzed after spontaneous drop-down of the injected ticks. Enolase knockdown caused a significant increase ($P < 0.05$) in feeding duration and decreased engorgement weight compared with the control group (Table 1). The average engorgement weight of enolase dsRNA-injected

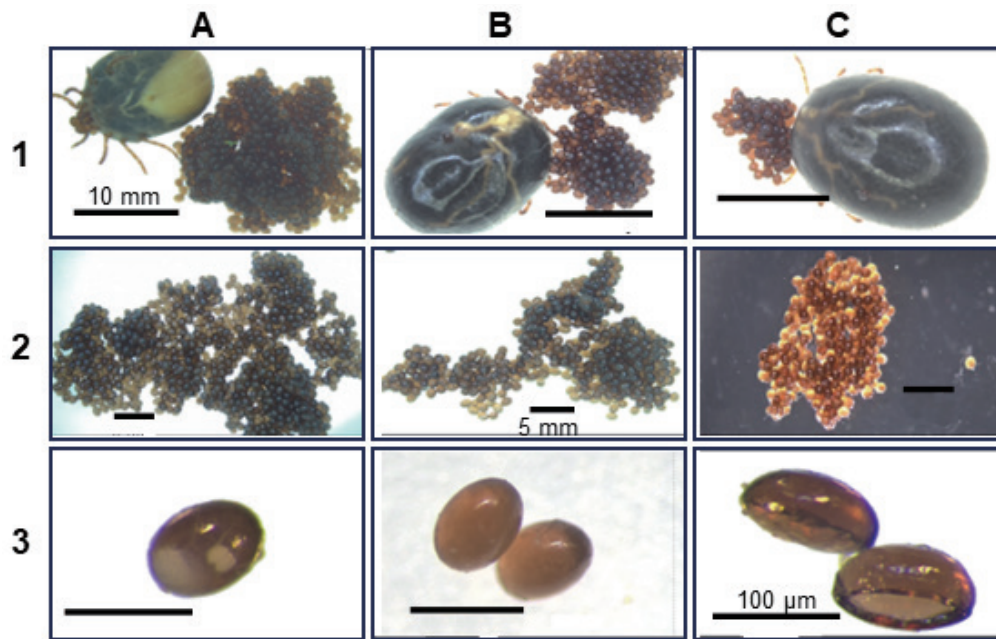


Fig. 6. Phenotypic changes in tick (*Haemaphysalis longicornis*) egg morphology and reduce egg hatching ability compared with. 1, non-injected; 2, buffer control; 3, enolase dsRNA-treated group; (A, B) control ticks, eggs and Control tick eggs containing embryos; (C) enolase dsRNA-treated ticks after spontaneous drop-down, eggs, Abnormal eggs (no embryos).

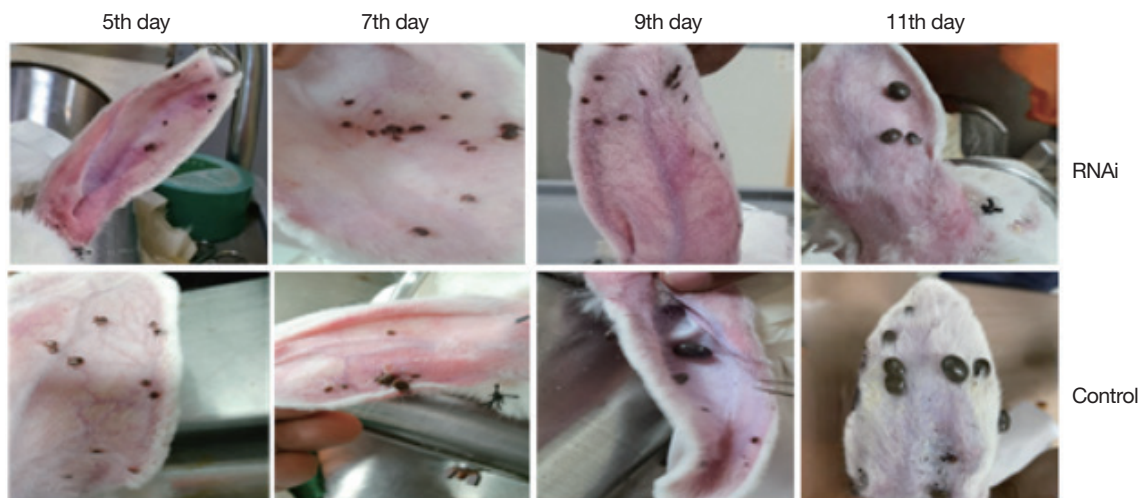


Fig. 7. Morphological changes of adult *H. longicornis* after RNAi silencing of enolase. Upper panel shows RNAi induced enolase knock-down ticks and lower panel represents control ticks.

Table 1. Effects of enolase dsRNAi treatment on adult female tick blood engorgement, egg mass weight, and egg hatching rate^a

Groups	Death rate after injection (%)	Attachment rate at 24 h (%)	Feeding duration (days)	Engorgement weight (mg/tick)	Egg mass weight (mg/tick)	Egg hatching rate (%)
dsRNA	5	75 ± 1.11	11 ± 0.82	148 ± 0.002	20.6 ± 0.011	53 ± 1.73
Control	0	100 ± 0.0	8 ± 0.5	440 ± 0.01	380 ± 0.01	93 ± 1.58

^aValues are expressed as mean ± SD (*n* = 20).

ticks was 148.38 mg, while that of the control group was 440 mg.

Effects on reproduction

To assess the impact of enolase on reproduction, egg mass and hatchability were examined after spontaneous dropdown of enolase dsRNA-injected ticks. Enolase dsRNA abrogated egg production, and enolase dsRNA-injected ticks showed significantly reduced egg mass (average: 20.6 mg) compared with the control group (average: 380 mg; Table 1) ($P < 0.05$). The egg hatching rate of 53% was also significantly reduced ($P < 0.05$) compared with that of the control group (Table 1).

Discussion

Many researchers have reported that enolase is present in multiple species such as plants, parasites, and bacteria [25-27] as well as in *Ornithodoros moubata* tick [9]. During blood feeding, ticks secrete an excess number of components into saliva to facilitate blood collection from the vertebrate host. Saliva consists of anti-immunomodulatory, anti-vasodilator, anti-coagulant, anti-complement, and anti-platelet aggregation factors [28]. Recently, sialo transcriptome analysis of *H. flava* showed the presence of significant amounts of an enolase-like homologous protein in salivary fluid in the adult and nymph stages [29]. Enolase, involved not only in glycolysis [21] and gluconeogenesis, but also in metabolic process [31]. Enolase is typically found in the cytosol [32], but it can translocate to the cell surface in response to inflammatory signals [33]. On the cell surface, enolase functions as a plasminogen receptor [34,35] stimulating fibrinolysis and breakdown of the extracellular matrix. Fibrinolysis may be crucial for ticks to break up any clots that may develop during feeding and to stop the ingested blood meal from clotting in the tick midgut.

The importance of enolase in feeding and reproduction was identified by using gene silencing. Knockdown of the enolase gene resulting in dysfunction in blood-sucking and reproduction in *Ornithodoros moubata* ticks [9]. Therefore, research on the enolase gene may offer a novel perspective on how to manage ticks and diseases transmitted by ticks. The genetic and functional significance of enolase in ticks such as *H. longicornis* and other species is unclear despite its mention in several organismal transcriptome investigations.

In the present study, the full-length cDNA of *H. longicornis* enolase was composed of 1,300-bp-long, encompassing a 1,297-bp-long ORF. Sequence analysis showed that enolase contained 20 domains and several motifs, including the membrane re-association region LLKVNQIGSVTE (Fig. 1). The molecular characteristics of enolase showed similar structural features in the hard tick *H. flava* [29] and the soft tick *O. moubata* [9]. The phyloge-

netic analysis confirmed a close relationship among the tick species *R. microplus*, *D. silvarum*, *H. flava*, *A. parvum*, and *I. scapularis* (Fig. 3).

Expression of enolase genes have been reported to vary depending on stages and tissues. In *H. longicornis*, serpin-2 is expressed in the nymph and adult stages in the salivary gland, but not in the midgut [36]. Conversely, enolase is present in the blood feeding stage [37]. Hemolymph in engorged adult *H. flava* was discovered using liquid chromatography-tandem mass spectrometry in an earlier investigation [38].

In the present study, RNAi-induced knockdown of enolase gene significantly decreased tick attachment compared with the control group (75% vs. 100%, $P < 0.05$) (Table 1) and also decreased their engorgement weight (148 ± 0.002 vs. 440 ± 0.01 mg/adult tick), and reproduction (Table 1). In adults, enolase subsequently increased feeding duration (11 ± 0.82 days) compared with the control group (8 ± 0.5 days) (Table 1). Furthermore, egg hatching was significantly reduced (53% vs. 93%). In addition, the egg-laying rate and egg quality of female ticks were significantly decreased, as previously reported [37]. The enolase-silenced ticks showed much lower egg mass (20.6 ± 0.011 mg/tick) than the control group (380 ± 0.01 mg/tick), which might be caused by their delayed blood feeding capability. When a tick is feeding on blood, enolase activity increases. Enolase silencing disrupts glycolysis process, interfere with ATP production, and stops the fibrinolysis process, causing blood to clot. The ticks lost their ability to suck blood. Ticks can rapidly intake blood in the middle period of blood feeding. Thus, to maintain blood flow, secreted salivary proteins are essential for tick survival because they aid in preventing host hemostasis [39].

qRT-PCR analysis of enolase mRNA levels revealed much higher expression in salivary glands, midgut, and synganglia of fed ticks than in other tissues examined. This result suggests that enolase plays an important role in tick blood feeding, which is in agreement with previous reports on enolase anticoagulation [9,29]. The TCA cycle and other energy metabolism pathways in the salivary gland cells and other organs are more active when ticks transition into the blood-feeding stage, enabling faster conversion of carbohydrates, fats, and proteins from the host's blood into ATP via the respiratory chain. Most organs in ticks rapidly develop after a short duration of blood feeding [37].

Enolase expression was regulated in salivary glands and other bodily tissues after silencing with RNAi. The salivary gland of the tick produces a variety of bioactive compounds necessary for tick feeding [8]. Our results revealed that enolase is crucial for tick blood feeding, indicating a new target for tick prevention. Future research on enolase in relation to a vaccine strategy will aid in design of tick control measures.

Acknowledgments

This research was supported by the Korea Institute of Planning and Evaluation for Technology in Food, Agriculture, Forestry, and Fisheries (IPET) through the Agriculture, Food, and Rural Affairs Convergence Technologies Program for Educating Creative Global Leaders, funded by the Ministry of Agriculture, Food, and Rural Affairs (MAFRA) (grant number: 320005-4).

References

- Chae JB, Cho YS, Cho YK, Kang JG, Shin NS, et al. Epidemiological investigation of tick species from near domestic animal farms and cattle, goat, and wild boar in Korea. *Parasites Hosts Dis* 2019;57(3):319-324. <https://doi.org/10.3347/kjp.2019.57.3.319>
- Abbas RZ, Zaman MA, Colwell DD, Gilleard J, Iqbal Z. Acaricide resistance in cattle ticks and approaches to its management: the state of play. *Vet Parasitol* 2014;203(1-2):6-20. <https://doi.org/10.1016/j.vetpar.2014.03.006>
- Tirloni L, Islam MS, Kim TK, Diedrich JK, Yates JR, et al. Saliva from nymph and adult females of *Haemaphysalis longicornis*: a proteomic study. *Parasit Vectors* 2015;8(1):338. <https://doi.org/10.1186/s13071-015-0918-y>
- Díaz-Martín V, Manzano-Román R, Oleaga A, Encinas-Grandes A, Pérez-Sánchez R. Cloning and characterization of a plasminogen-binding enolase from the saliva of the argasid tick *Ornithodoros moubata*. *Vet Parasitol* 2013;191(3-4):301-314. <https://doi.org/10.1016/j.vetpar.2012.09.019>
- Wang WX, Li KL, Chen Y, Lai FX, Fu Q. Identification and function analysis of enolase gene NlEno1 from *Nilaparvata lugens* (Stål) (Hemiptera:Delphacidae). *J Insect Sci* 2015;15(1):66. <https://doi.org/10.1093/jisesa/iev046>
- Xu XL, Cheng TY, Yang H. Enolase, a plasminogen receptor isolated from salivary gland transcriptome of the ixodid tick *Haemaphysalis flava*. *Parasitol Res* 2016;115(5):1955-1964. <https://doi.org/10.1007/s00436-016-4938-0>
- Fire A, Xu S, Montgomery MK, Kostas SA, Driver SE, Mello CC. Potent and specific genetic interference by double-stranded RNA in *Caenorhabditis elegans*. *Nature* 1998;391(6669):806-811. <https://doi.org/10.1038/35888>
- Rahman MK, Kim B, You M. Molecular cloning, expression and impact of ribosomal protein S-27 silencing in *Haemaphysalis longicornis* (Acari: Ixodidae). *Exp Parasitol* 2020;209:107829. <https://doi.org/10.1016/j.exppara.2019.107829>
- Díaz-Martín V, Manzano-Román R, Oleaga A, Encinas-Grandes A, Pérez-Sánchez R. Cloning and characterization of a plasminogen-binding enolase from the saliva of the argasid tick *Ornithodoros moubata*. *Vet Parasitol* 2013;191(3-4):301-314. <https://doi.org/10.1016/j.vetpar.2012.09.019>
- Di Tommaso P, Moretti S, Xenarios I, Orobítz M, Montanyola A, et al. T-Coffee: a web server for the multiple sequence alignment of protein and RNA sequences using structural information and homology extension. *Nucleic Acids Res* 2011;39(suppl):W13-W7. <https://doi.org/10.1093/nar/gkr245>
- Sievers F, Wilm A, Dineen D, Gibson TJ, Karplus K, et al. Fast, scalable generation of high-quality protein multiple sequence alignments using Clustal Omega. *Mol Syst Biol* 2011;7:539. <https://doi.org/10.1038/msb.2011.75>
- Kumar S, Stecher G, Li M, Niyaz C, Tamura K. MEGA X: molecular evolutionary genetics analysis across computing platforms. *Mol Biol Evol* 2018;35(6):1547-1549. <https://doi.org/10.1093/molbev/msy096>
- Rahman MK, Saiful Islam M, You M. Impact of subolesin and cystatin knockdown by RNA interference in adult female *Haemaphysalis longicornis* (Acari: Ixodidae) on blood engorgement and reproduction. *Insects* 2018;9(2):39. <https://doi.org/10.3390/insects9020039>
- de la Fuente J, Kocan KM, Almazán C, Blouin EF. RNA interference for the study and genetic manipulation of ticks. *Trends Parasitol* 2007;23(9):427-433. <https://doi.org/10.1016/j.pt.2007.07.002>
- Karim S, Miller NJ, Valenzuela J, Sauer JR, Mather TN. RNAi-mediated gene silencing to assess the role of synaptobrevin and cystatin in tick blood feeding. *Biochem Biophys Res Commun* 2005;334(4):1336-1342. <https://doi.org/10.1016/j.bbrc.2005.07.036>
- de la Fuente J, Almazán C, Blouin EF, Naranjo V, Kocan KM. Reduction of tick infections with *Anaplasma marginale* and *A. phagocytophilum* by targeting the tick protective antigen subolesin. *Parasitol Res* 2006;100(1):85-91. <https://doi.org/10.1007/s00436-006-0244-6>
- Commins SP, James HR, Kelly LA, Pochan SL, Workman LJ, et al. The relevance of tick bites to the production of IgE antibodies to the mammalian oligosaccharide galactose- α -1, 3-galactose. *J Allergy Clin Immunol Pract* 2011;127(5):1286-1293. <https://doi.org/10.1016/j.jaci.2011.02.019>
- Kocan KM, Manzano-Roman R, de la Fuente J. Transovarial silencing of the subolesin gene in three-host ixodid tick species after injection of replete females with subolesin dsRNA. *Parasitol Res* 2007;100(6):1411-1415. <https://doi.org/10.1007/s00436-007-0483-1>
- Rahman MK, You M. Molecular cloning and transcriptional and functional analysis of glycogen synthase kinase-3 β in *Haemaphysalis longicornis* (Acari, Ixodidae). *Parasite* 2019;26:39. <https://doi.org/10.1051/parasite/2019038>
- Pfaffl MW. A new mathematical model for relative quantification in real-time RT-PCR. *Nucleic Acids Res* 2001;29(9):e45. <https://doi.org/10.1093/nar/29.9.e45>
- Pancholi V. Multifunctional α -enolase: its role in diseases. *Cell Mol Life Sci* 2001;58(7):902-920. <https://doi.org/10.1007/pl00000910>
- Sigrist CJA, De Castro E, Cerutti L, Cuche BA, Hulo N, et al. New and continuing developments at PROSITE. *Nucleic Acids Res* 2012;41(database issue):344-347. <https://doi.org/10.1093/nar/gks1067>
- Cao H, Zhou Y, Chang Y, Zhang X, Li C, et al. Comparative phosphoproteomic analysis of developing maize seeds suggests a pivotal role for enolase in promoting starch synthesis. *Plant Sci* 2019;289:110243. <https://doi.org/10.1016/j.plantsci.2019.110243>
- Quintero-Troconis E, Buelvas N, Carrasco-López C, Domin-

- go-Sananes M, González-González L, et al. Enolase from *Trypanosoma cruzi* is inhibited by its interaction with metallo-carboxypeptidase-1 and a putative acireductone dioxygenase. *Biochim Biophys Acta Proteins Proteom* 2018;1866(5-6):651-660. <https://doi.org/10.1016/j.bbapap.2018.03.003>
25. Salazar N, de Souza MCL, Biasioli AG, da Silva LB, Barbosa AS. The multifaceted roles of *Leptospira* enolase. *Res Microbiol* 2017;168(2):157-164. <https://doi.org/10.1016/j.resmic.2016.10.005>
26. Neelakanta G, Sultana H. Tick saliva and salivary glands: what do we know so far on their role in arthropod blood feeding and pathogen transmission. *Front Cell Infect Microbiol* 2022;11:816547. <https://doi.org/10.3389/fcimb.2021.816547>
27. Xu XL, Cheng TY, Yang H. Enolase, a plasminogen receptor isolated from salivary gland transcriptome of the ixodid tick *Haemaphysalis flava*. *Parasitol Res* 2016;115(5):1955-1964. <https://doi.org/10.1007/s00436-016-4938-0>
28. Avilán L, Gualdrón-López M, Quiñones W, González-González L, Hannaert V, et al. Enolase: a key player in the metabolism and a probable virulence factor of trypanosomatid parasites—perspectives for its use as a therapeutic target. *Enzyme Res* 2011;2011:932549. <https://doi.org/10.4061/2011/932549>
29. Piast M, Kustrzeba-Wójcicka I, Matusiewicz M, Banaś T. Molecular evolution of enolase. *Acta Biochim Pol* 2005;52(2):507-513.
30. Haque A, Ray SK, Cox A, Banik NL. Neuron specific enolase: a promising therapeutic target in acute spinal cord injury. *Metab Brain Dis* 2016;31(3):487-495. <https://doi.org/10.1007/s11011-016-9801-6>
31. de la Torre-Escudero E, Manzano-Román R, Pérez-Sánchez R, Siles-Lucas M, Oleaga A. Cloning and characterization of a plasminogen-binding surface-associated enolase from *Schistosoma bovis*. *Vet Parasitol* 2010;173(1-2):76-84. <https://doi.org/10.1016/j.vetpar.2010.06.011>
32. Díaz-Ramos À, Roig-Borrellas A, García-Melero A, López-Alemay R. α -Enolase, a multifunctional protein: its role on pathophysiological situations. *J Biomed Biotechnol* 2012;2012. <https://doi.org/10.1155/2012/156795>
33. Imamura S, Junior IdSV, Sugino M, Ohashi K, Onuma M. A serine protease inhibitor (serpin) from *Haemaphysalis longicornis* as an anti-tick vaccine. *Vaccine* 2005;23(10):1301-1311. <https://doi.org/10.1016/j.vaccine.2004.08.041>
34. Ren S, Zhang B, Xue X, Wang X, Zhao H, et al. Salivary gland proteome analysis of developing adult female *Haemaphysalis longicornis* ticks: molecular motor and TCA cycle-related proteins play an important role throughout development. *Parasit Vectors* 2019;12(1):1-16. <https://doi.org/10.1186/s13071-019-3864-2>
35. Liu L, Yan F, Zhang L, Wu ZF, Duan DY, Cheng TY. Protein profiling of hemolymph in *Haemaphysalis flava* ticks. *Parasit Vectors* 2022;15(1):1-12. <https://doi.org/10.1186/s13071-022-05287-7>
36. Xu XL, Cheng TY, Yang H, Yan F, Yang Y. De novo sequencing, assembly and analysis of salivary gland transcriptome of *Haemaphysalis flava* and identification of sialoprotein genes. *Infect Genet Evol* 2015;32:135-142. <https://doi.org/10.1016/j.meegid.2015.03.010>