

Cercaria caribbea LVIII Cable, 1963 (Digenea: Cyathocotylidae) in the Republic of Korea and Its Surface Ultrastructure

Eun-Taek Han^{1,†}, Jeong-Hyun Park^{2,†} and Jong-Yil Chai^{3,*}

¹Department of Medical Environmental Biology and Tropical Medicine and ²Department of Anatomy and Cell Biology, Kangwon National University School of Medicine, Chuncheon 200-701, Korea; ³Department of Parasitology and Tropical Medicine, Seoul National University College of Medicine, Seoul 110-799, Korea

Abstract: *Cercaria caribbea* LVIII Cable, 1963 (Digenea: Cyathocotylidae) was detected from a brackish water gastropod species (*Cerithideopsisilla cingulata*) in a coastal area of Shinan-gun, Jeollanam-do (Province), the Republic of Korea, and its surface ultrastructure was studied using a scanning electron microscope. The cercariae were found freely swimming or enveloped within daughter sporocysts when the snail host was mechanically broken. They were morphologically characterized by a linguiform and ventrally concave body, a long and bifurcated tail, and the presence of a holdfast (=tribocytic) organ posterior to the ventral sucker. On the whole ventral and dorsal surfaces, peg-like tegumental spines were densely distributed. Around the oral sucker, several sensory papillae, each with a short cilium, were distributed, and on the tail, sensory papillae, each with an extensively long cilium, were observed. This is the first record describing a cyathocotylid cercaria from a brackish water gastropod in the Republic of Korea.

Key words: *Cercaria caribbea* LVIII, cercaria, trematode, gastropod, surface ultrastructure

In the trematode life cycle, snails have an important role of the first, or first and second, intermediate host [1]. In the Family Cyathocotylidae Muhling, 1898, the final hosts include reptiles, birds, and mammals. Mother and daughter sporocysts are found in gastropods, and metacercariae are detected in fishes, amphibians, and aquatic invertebrates [2]. Little has been known about the kinds of cyathocotylid cercariae in marine gastropods in the Republic of Korea. In the present study, we detected sporocysts and cercariae of *Cercaria caribbea* LVIII Cable, 1963 in a gastropod snail, *Cerithideopsisilla cingulata*, from Shinan-gun, Jeollanam-do (Province), the Republic of Korea, and their surface ultrastructure was studied.

The gastropod snails, *C. cingulata* (2.3×0.9 cm in length and diameter), were collected from a coastal area of Shinan-gun, Jeollanam-do, the Republic of Korea. To obtain freshly emerging cercariae, the snails were individually placed in a small vial containing filtered seawater and left at room temperature until

examined using a dissecting microscope. Daughter sporocysts (hereafter sporocysts) were obtained by dissecting infected gastropods. The larval stages were studied live, unstained, or vitally stained with 5% neutral red, and also after fixation with hot acetic acid-formalin-alcohol fixative and staining with acetocarmine. Measurements, in micrometers, were done on 20 vitally stained specimens, with the range and mean in parentheses.

The cercariae were washed with 0.2 M cacodylate buffer (pH 7.3) and fixed with 2.5% glutaraldehyde solution. They were dehydrated with a graded series of ethanol, dried in a critical point dryer, mounted on aluminum stubs, and coated with gold using an ion sputtering coater (IB-3, Giko Engineering Co., Tokyo, Japan). The specimens were observed using a scanning electron microscope (ISI DS-130C, Akashi Co., Tokyo, Japan) at an accelerating voltage of 10 kV.

Seven *C. cingulata* (0.3%) were found infected with sporocysts of *C. caribbea* LVIII out of a total of 2,015 snails examined. As many as 76-131 sporocysts (13.6±0.9×0.8±0.03 mm) were found per snail, and 310 to 394 (mean 353) cercariae (160±33×105±18 µm) were detected per snail (Table 1).

Description of sporocysts and cercariae is based on light and scanning electron microscopic examinations. Sporocysts had a cylindrical body with transverse ridges on the tegumental sur-

•Received 29 February 2012, revised 31 March 2012, accepted 2 April 2012.

† These authors contributed equally to this work.

*Corresponding author (cyj@snu.ac.kr)

© 2012, Korean Society for Parasitology

This is an Open Access article distributed under the terms of the Creative Commons Attribution Non-Commercial License (<http://creativecommons.org/licenses/by-nc/3.0>) which permits unrestricted non-commercial use, distribution, and reproduction in any medium, provided the original work is properly cited.

face (Fig. 1A). Mature and immature cercariae were observed within the sporocysts (Fig. 1B, C). The cercarial body was linguiform, concave ventrally, and its tail was bifurcated with characters of the cyathocotyloid group (Figs. 1D, E, 2A). The tegument of the body and tail was covered with densely distributed sharp-pointed peg-like spines (Fig. 2B-J). Single type I papillae

were circularly arranged on the ventral surface of the body symmetrically.

The oral sucker was small and subterminal. Several grouped type I papillae with a short cilium were observed on the lip of the oral sucker. Several type I papillae were also found around the oral sucker (Fig. 2E). The ventral sucker was embryonic. In a short distance posterior to the ventral sucker, the primordium of the tribocytic organ was observed. The tegument posterior to the primitive tribocytic organ was wrinkled, with a deep central groove and numerous centrifugally arranged shallow grooves (Fig. 2H). On the bifurcated tail, short spines with a broad base and a single pointed tip were densely distributed (Fig. 2I, J). Two papillae with a long cilium were observed on the fin, and 2 other papillae were observed near the tip of the tail (Fig. 2D). From the base of the tail tip, the finely ribbed fin was observed continuously along the dorsal and ventral edges of each furca. On the tip of each furca, several spines were observed which were larger than those of the general cuticular spination (Fig. 2C, D).

Based on the above characters, we identified the sporocysts

Table 1. Comparative measurements of *Cercaria caribbea* LVIII in this study and the original report by Cable in 1963 [3]

Organ		Present study	Cable (1963) [3]
Body	Length	160±33	248-270
	Width	105±18	103-118
Oral sucker	Length	35±5	38-42
	Width	40±7	31-39
Ventral sucker	Length	14±2	18 (diam.)
	Width	16±2	-
Tail stem	Length	202±71	352-390
	Width	30±8	53-63
Furcae (1/2)	Length	135±28	186-193
	Width	17±3	27

Unit: μm .

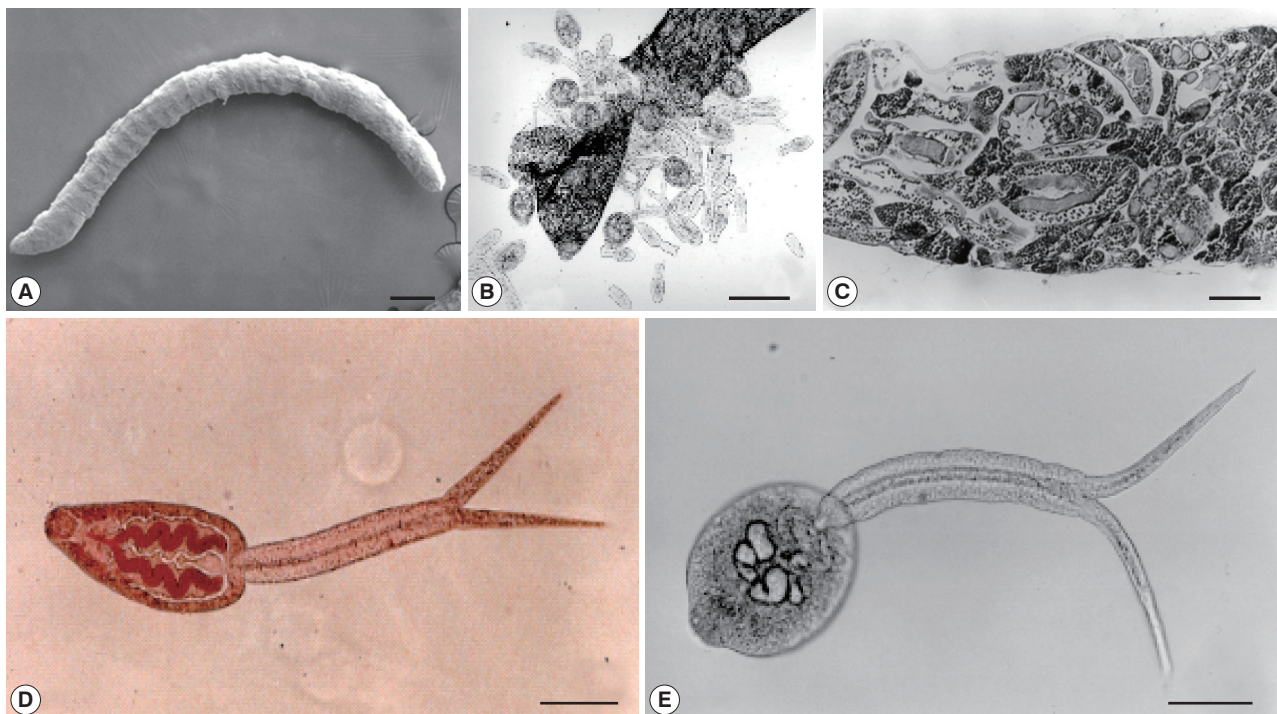


Fig. 1. Morphology of a sporocyst (A) and cercariae (B-E) of *Cercaria caribbea* LVIII from a brackish water gastropod, *Cerithideopsis cingulata*, in Korea. (A) A whole body scanning electron micrograph of a sporocyst. Bar=220 μm . (B) Mature and immature cercariae with cercarial embryos are escaping from the ruptured birthpore of a sporocyst. Bar=160 μm . (C) Cross-section of a sporocyst containing cercariae. Bar=25 μm . (D) A cercaria vitally stained with neutral red. Two convoluting ceca are seen as red color. Bar=25 μm . (E) An unstained cercaria. Bar=25 μm .

and cercariae found in the present study as *C. caribbea* LVIII Cable 1963 [3]. Although the size of the cercariae was about 2/3 of the original description, other morphological characters were well corresponded with the descriptions of *C. caribbea* [3]. Cyathocotylid trematodes have great morphological variability

in their adult and metacercarial stages [2]. However, the morphology of their cercariae is highly homogenous [3]. For this reason, the cercarial stage of cyathocotylids has advantages over adults in investigating the zoogeography of these trematodes, and correct identification is essential for such studies.

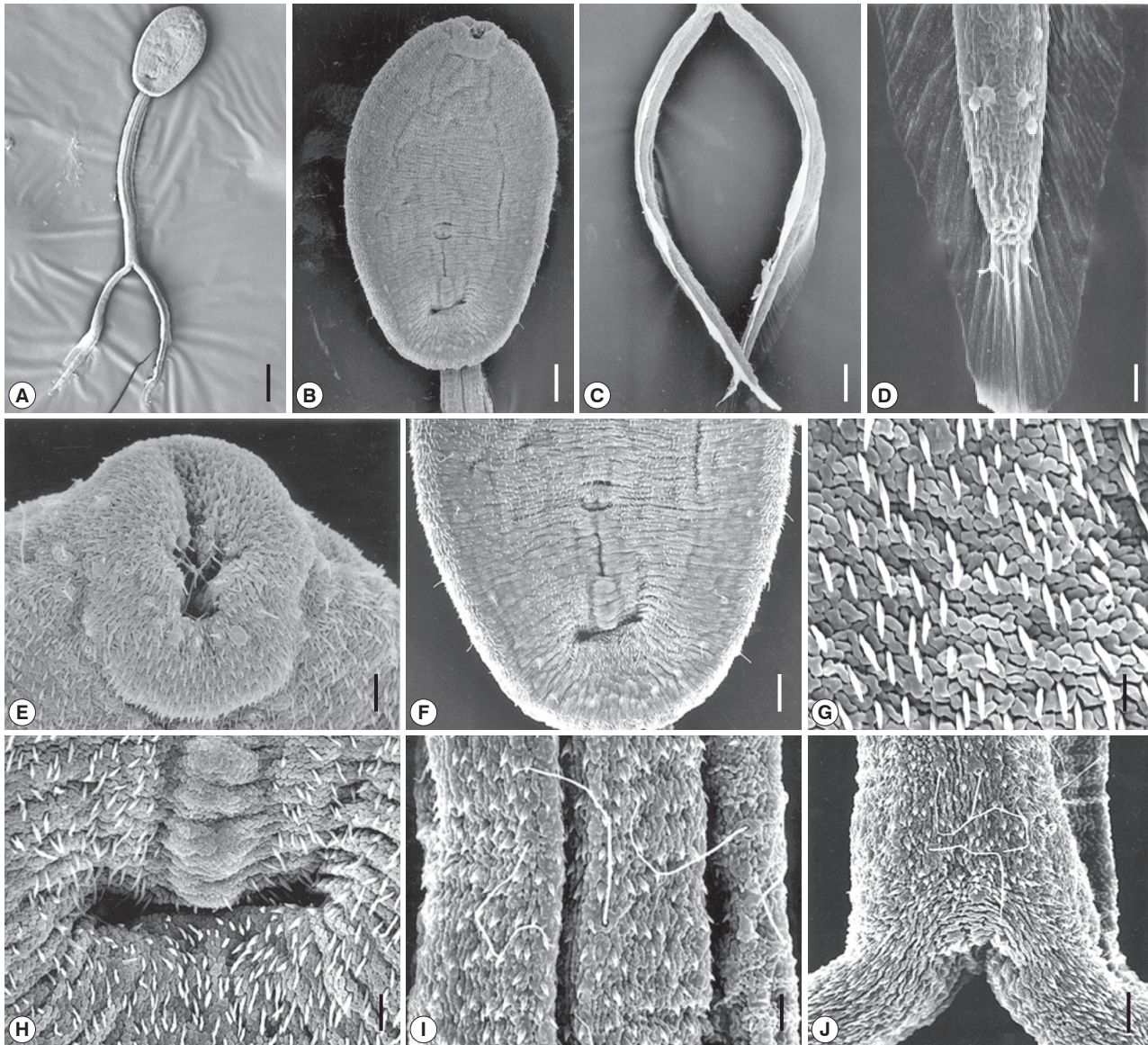


Fig. 2. Scanning electron micrographs of *Cercaria caribbea* LVIII cercaria. (A) Ventral view of a cercarial body and bifurcated tail. Bar = 50 μ m. (B) A cercarial body showing the oral and ventral suckers, ventral view. Tegumental spines are densely distributed in anterior surface of the body. Bar = 14 μ m. (C) The bifurcated tails look like oars. Bar = 17 μ m. (D) On the tip of each furca, several spines are observed, which are larger than those of the general cuticular spination. Two sensory papillae with a long cilium are seen on the fin (lower) and 2 others are observed anterior to the tip (upper). Bar = 3 μ m. (E) On the lip of the oral sucker, sensory papillae with a short cilium are distributed, and peg-like spines are seen on the surface. Bar = 3 μ m. (F) Ventral sucker was premature, and a primordial tribocytic organ is seen posteriorly close to the ventral sucker. Bar = 8 μ m. (G) Peg-like tegumental spines densely distributed on the body surface and furcae. Bar = 1 μ m. (H) A tegumental groove or pit located posteriorly far from the tribocytic organ. Bar = 3 μ m. (I) Surface of a part of the tail stem revealing sensory papillae with a long cilium. Bar = 3 μ m. (J) Long-ciliated sensory papillae on the base of the furcae. Bar = 3 μ m.

The numbering of *C. caribbea* series was initiated by Cable in 1956 with reporting 51 species from marine areas of Puerto Rico [3]. The 52nd species, *C. caribbea LII* (probably *Haplodena varia* Haplosporidae), was described in 1962 from Gulf-Caribbean regions [4]. Subsequently, the 53rd to 74th species were added from marine areas of Curaçao and Jamaica in 1963 [3]. However, the life cycle of the majority of the species is yet unknown. *C. caribbea LVIII* was originally described in a gastropod *Cerithium variable* from Jamaica [3]. After then, little has been known about this cercaria. Although size variation existed between our study and the previous report [3], other morphological characters of potential taxonomic importance in our specimens were identical to those of the original report. There were 2 cyathocotyloid cercariae, *C. caribbea LI* and *C. caribbea LVIII*, among those reported [3], and our specimens were consistent with the latter species.

Sensory papillae with a long cilium were observed on the body and tail of various fluke species; *Neodiplostomum seoulense* [5], *Clonorchis sinensis* [6], and *Metagonimus yokogawai* [7]. The sensory papillae are thought to be essential for the cercariae to find, attach, and penetrate into the fish host because they are not found on the metacercariae of those flukes. However, our cyathocotyloid cercariae, *C. caribbea VLIII*, had sensory papillae with an extremely long tail, which is characteristic from other cercarial species.

Cercaria caribbea XXXI, a microphallid species, was recently found from an estuarine snail, using crabs as second intermediate hosts in mangrove areas of Puerto Rico [8]. In Korea, at present, only *C. caribbea LVIII* among these cercarial series has

been found. The presence of *C. caribbea LVIII* in Jamaica, near the Atlantic Ocean, and in Korea, near the Pacific Ocean, may indicate a geographically wide distribution of this trematode species.

To date, the relationships of cyathocotyloid groups of cercariae in the systematics of the family Cyathocotyliidae are unclear. Thus, further studies are required on the life cycle and systematics of the cyathocotyloid cercariae.

REFERENCES

1. Chai JY, Lee SH. Food-borne intestinal trematode infections in the Republic of Korea. *Parasitol Int* 2002; 51: 129-154.
2. Yamaguti S. *Systema Helminthum*. New York, USA. Intersciences Publishers Inc. 1958.
3. Cable RM. Marine cercariae from Curaçao and Jamaica. *Z Parasitenkd* 1963; 23: 429-469.
4. Cable RM. A cercaria of the trematode family Haplosporidae. *J Parasitol* 1962; 48: 419-422.
5. Hong SJ, Lee DH, Hong ST, Chai JY, Lee SH. Surface ultrastructure of the cercaria of *Neodiplostomum seoulense* (Trematoda: Neodiplostomidae). *J Parasitol* 1996; 82: 837-840.
6. Fujino T, Ishii Y, Choi DW. The ultrastructural characterization of the tegument of *Clonorchis sinensis* (Cobbold, 1875) cercaria. *Z Parasitenkd* 1979; 60: 65-76.
7. Fujino T, Ishii Y, Sato S. Studies on the cercaria of the genus *Metagonimus* with the scanning electron microscope (Trematoda: Heterophyidae). *Jpn J Parasitol* 1976; 25: 175-185.
8. Lafferty KD, Hechinger RE, Lorda J, Soler L. Trematodes associated with mangrove habitat in Puerto Rican salt marshes. *J Parasitol* 91: 697-699.